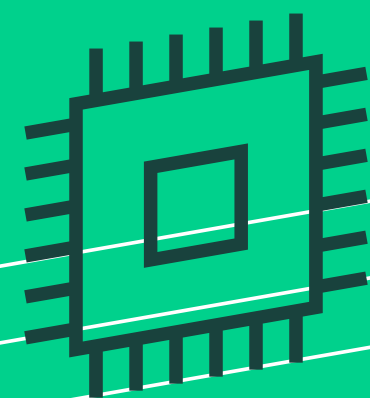


**[ laser  
pro**  
Excellence  
Hub



**Basic  
manual**

# Content

## Logo

**03** Font & Construction

**04** Colours

**05** Main Logo

**06** Sublogos

**07** Safe Zone

**08** Minimum size

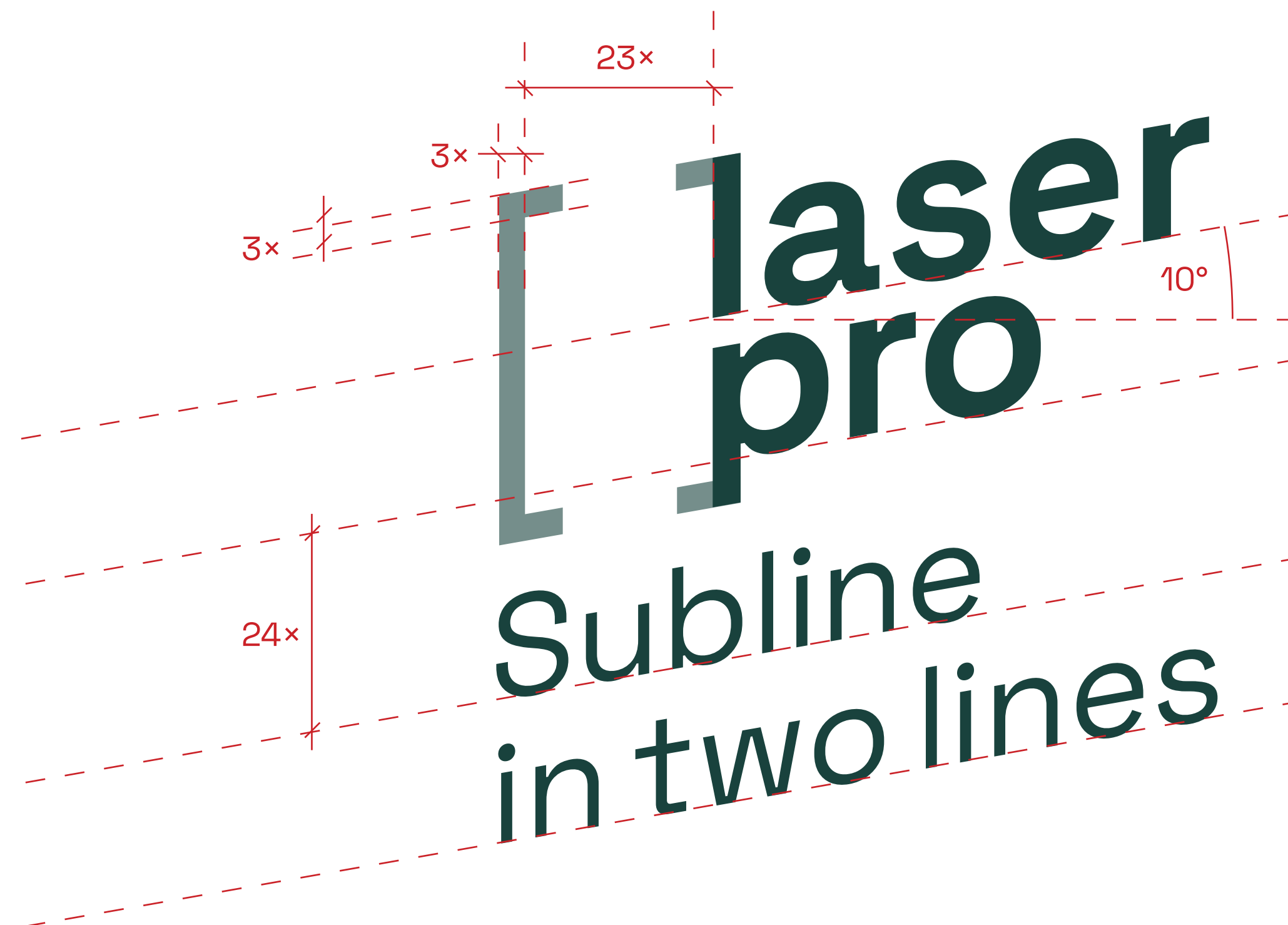
**09** Don'ts

## Design Elements

**10** Logo Brackets

**11** Line Grid

**12** Icons



**Dark Green**

HEX #19423d  
RGB 25/66/61  
CMYK 92/25/70/68  
Pantone P3305

**Light Green**

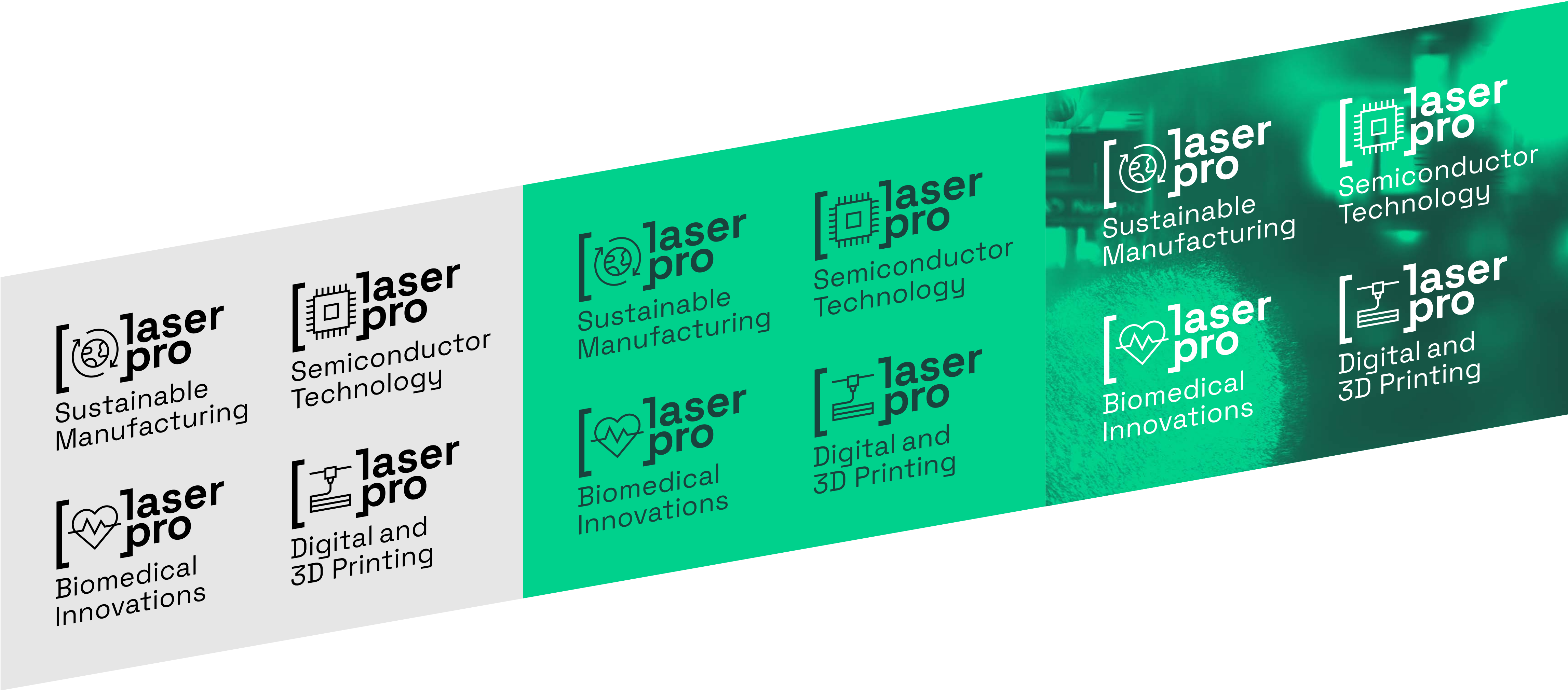
HEX #00d18c  
RGB 0/209/140  
CMYK 84/0/59/0  
Pantone P339

**[ laser  
pro**  
Excellence  
Hub

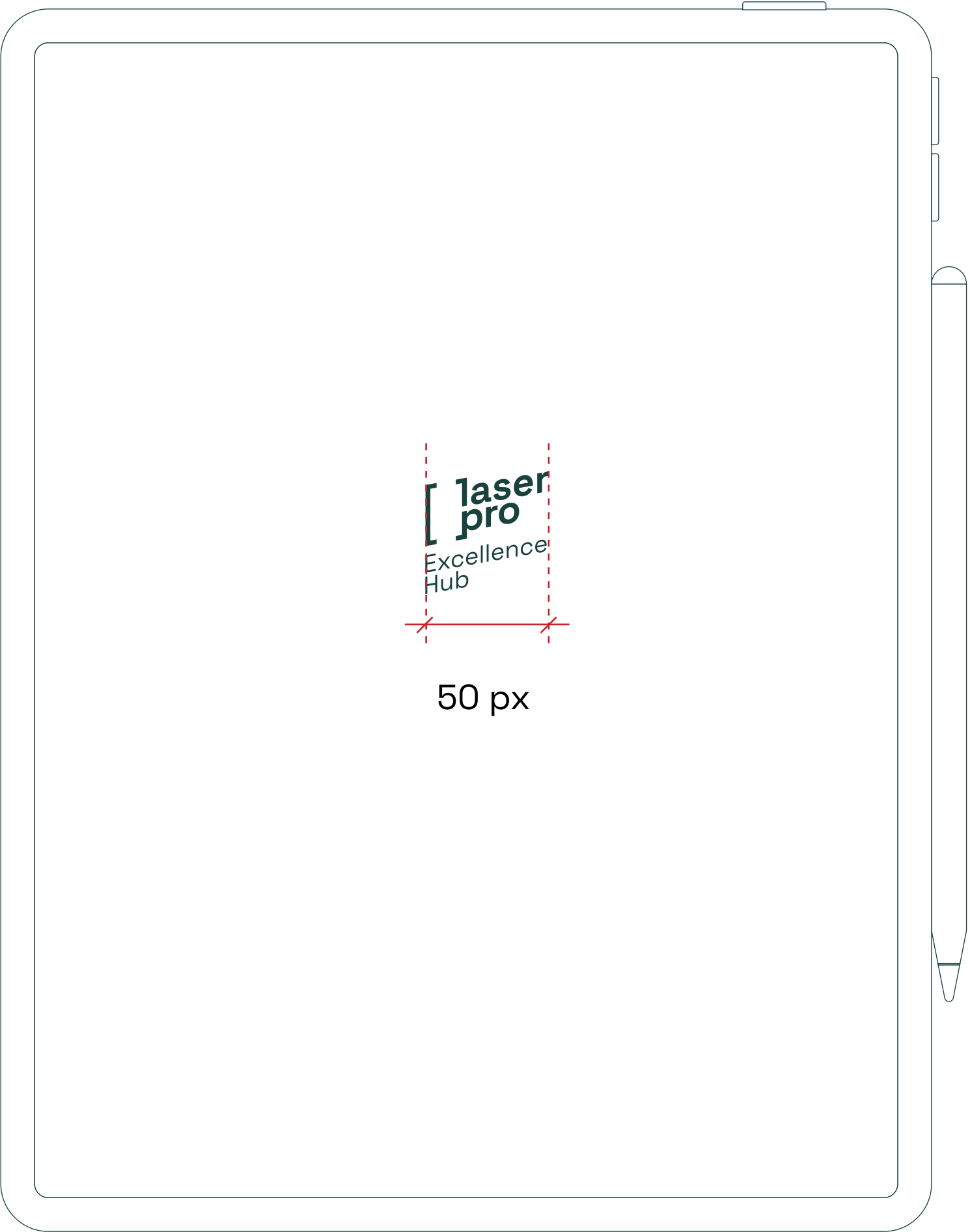
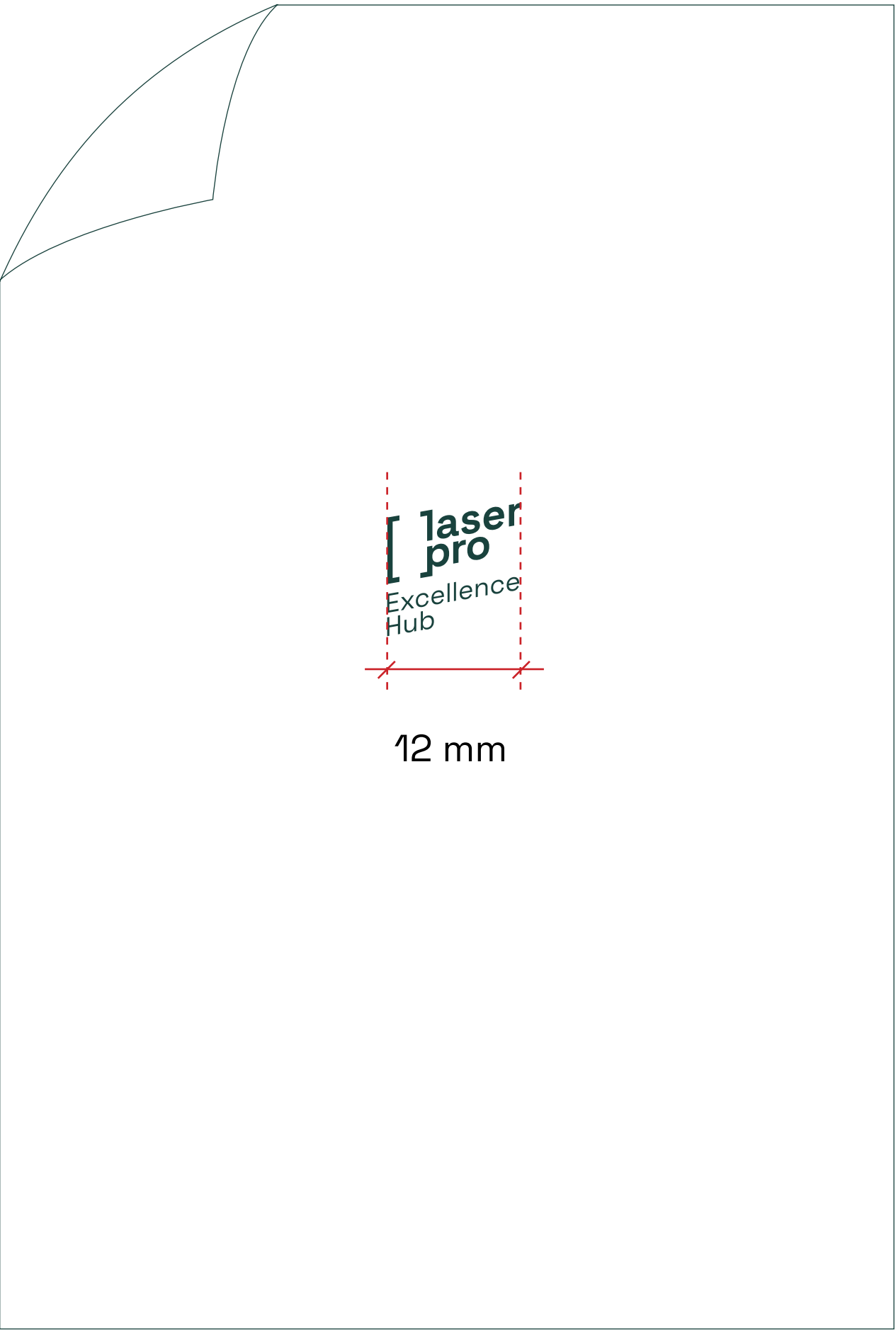
**[ laser  
pro**  
Excellence  
Hub

**[ laser  
pro**  
Excellence  
Hub

**[ laser  
pro**









**[ laser  
pro**  
Excellence  
Hub

**[ laser  
pro**  
Excellence  
Hub

**[ laser  
pro**  
Excellence  
Hub

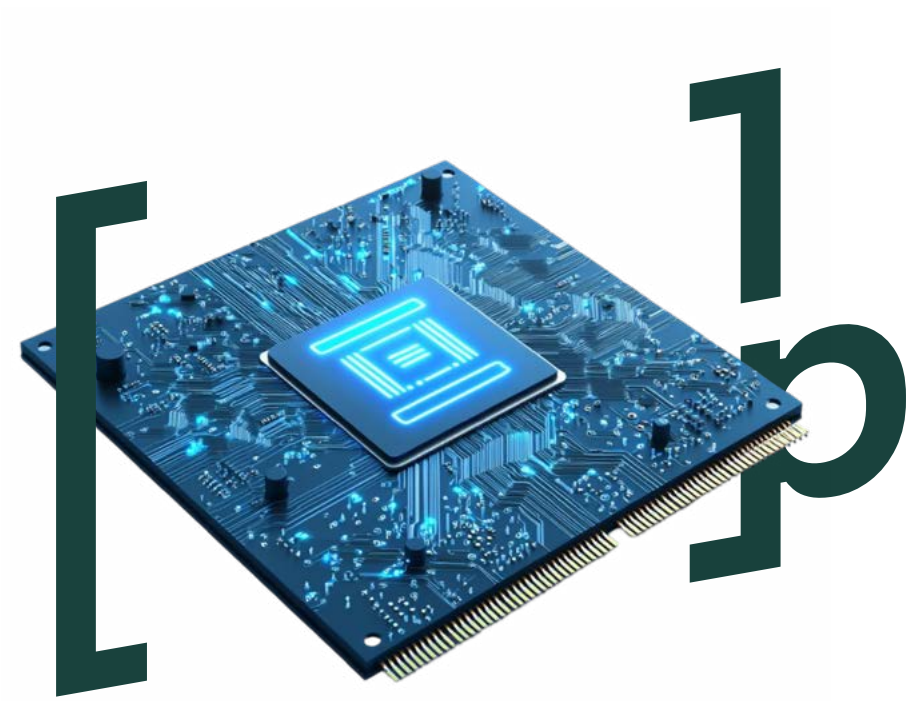
**laserpro**  
Excellence Hub

**[ laser  
pro**  
Excellence  
Hub



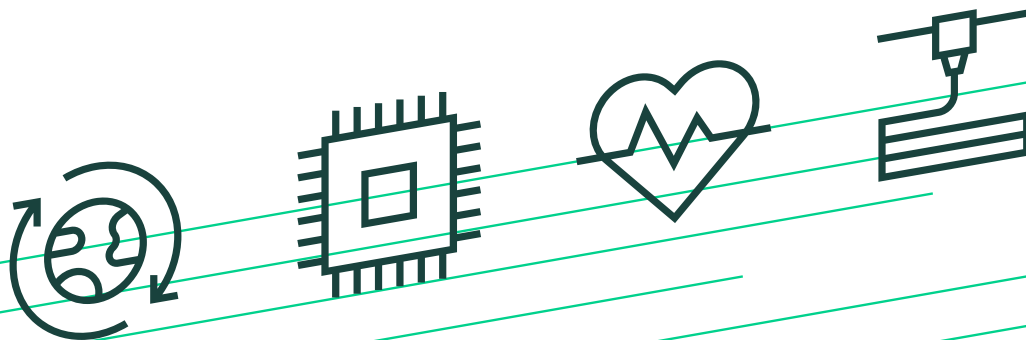
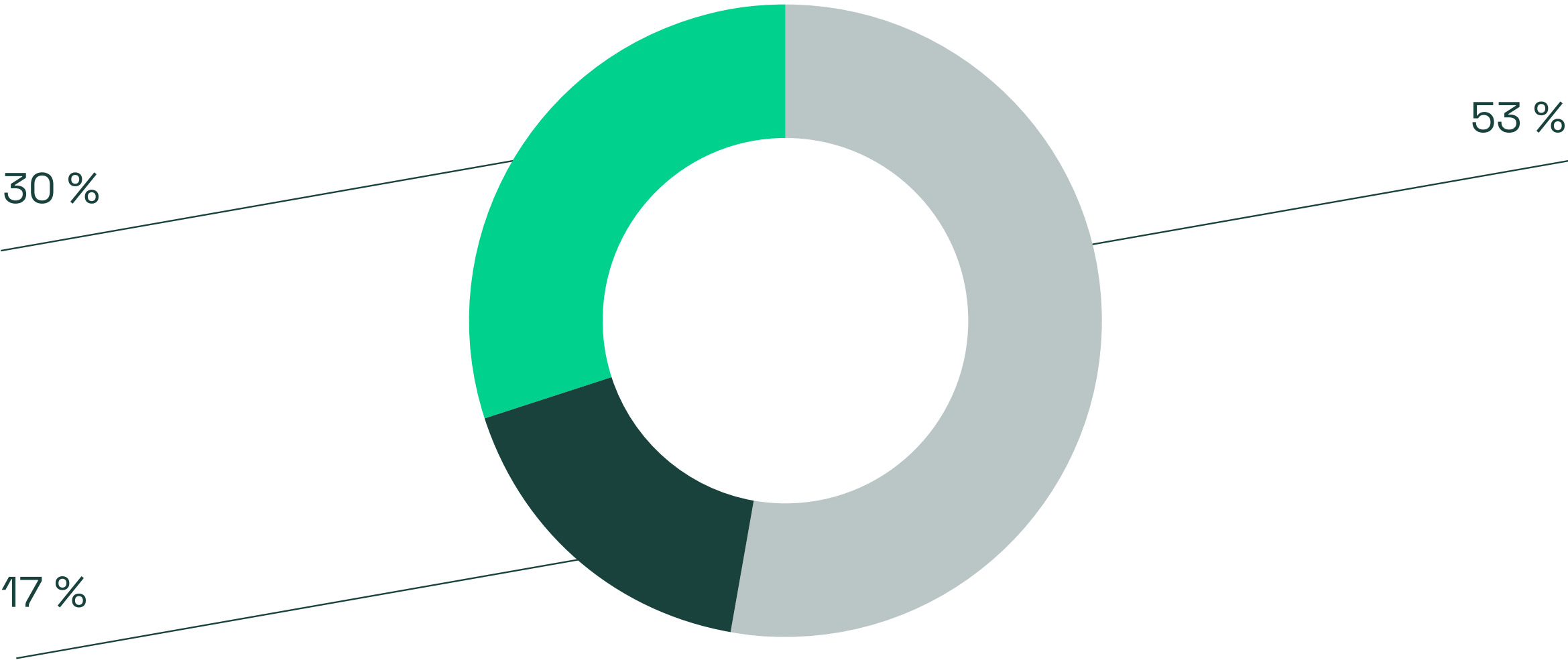
**[ laser  
pro**

The logo clips are a playful element with which we can brand common design elements.

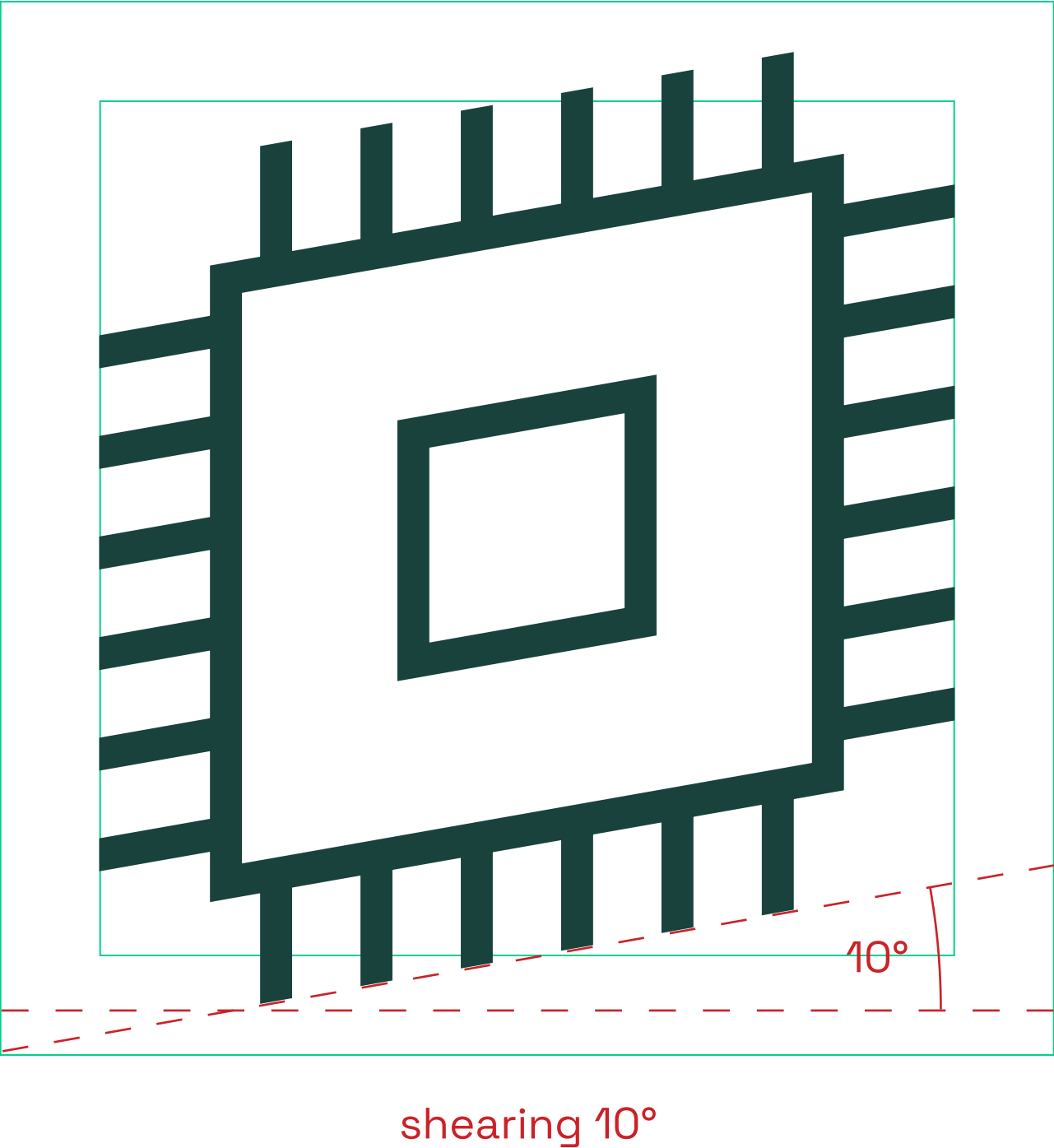
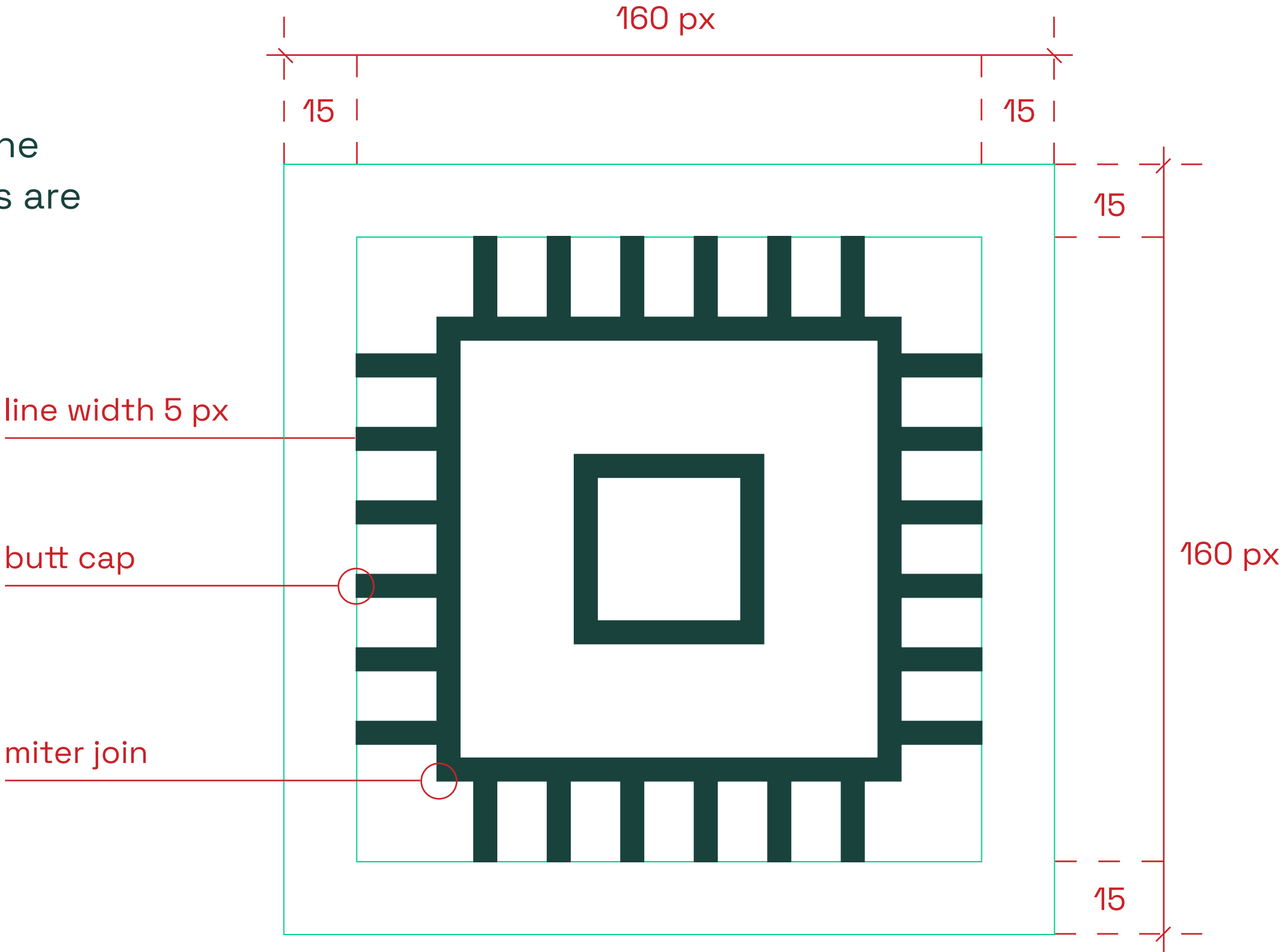


The grid of lines with its 10-degree gradient symbolises the dynamism of the project. It can be used decoratively in combination with other elements or quoted on other occasions.

Customised designs will be approved after consultation with the people responsible for marketing.



In addition to the icons for the four main areas, other icons may be helpful during the course of the project. Make sure that new icons are created in a standardised style.



LaserPro

Excellent Laser Technologies  
for the Sustainable Prosperity of Europe